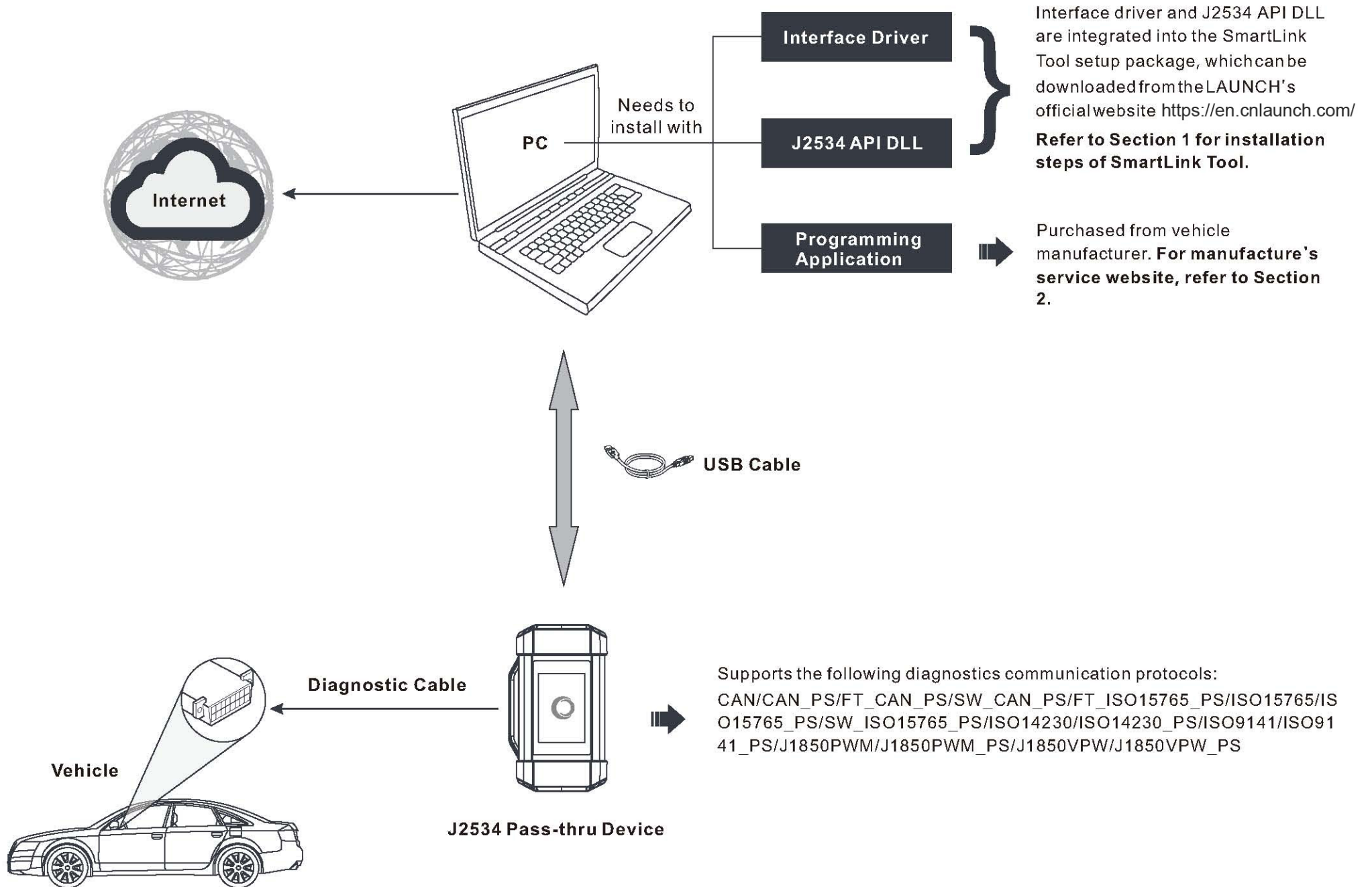


Working Principle of J2534 Reprogramming

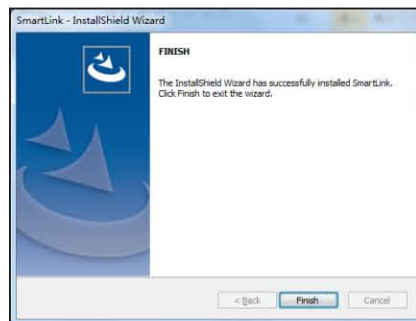


1. Install SmartLink Tool

1. Visit <https://en.cnlaunch.com/products/c-1.html> to download the Tool setup installation package under the corresponding product details page,
2. After downloading, decompress it, in which includes the driver installation package and associated instruction manual.
3. Double-click the SmartLink Tool.exe to run it, the following screen will appear. Click "Next" to start installing.



3. Follow the onscreen prompts to proceed until the following screen appears.



4. Click "Finish" to finish the installation. A SmartLink Tool icon will appear on the PC desktop. Now the J2534 reprogramming is ready to start.

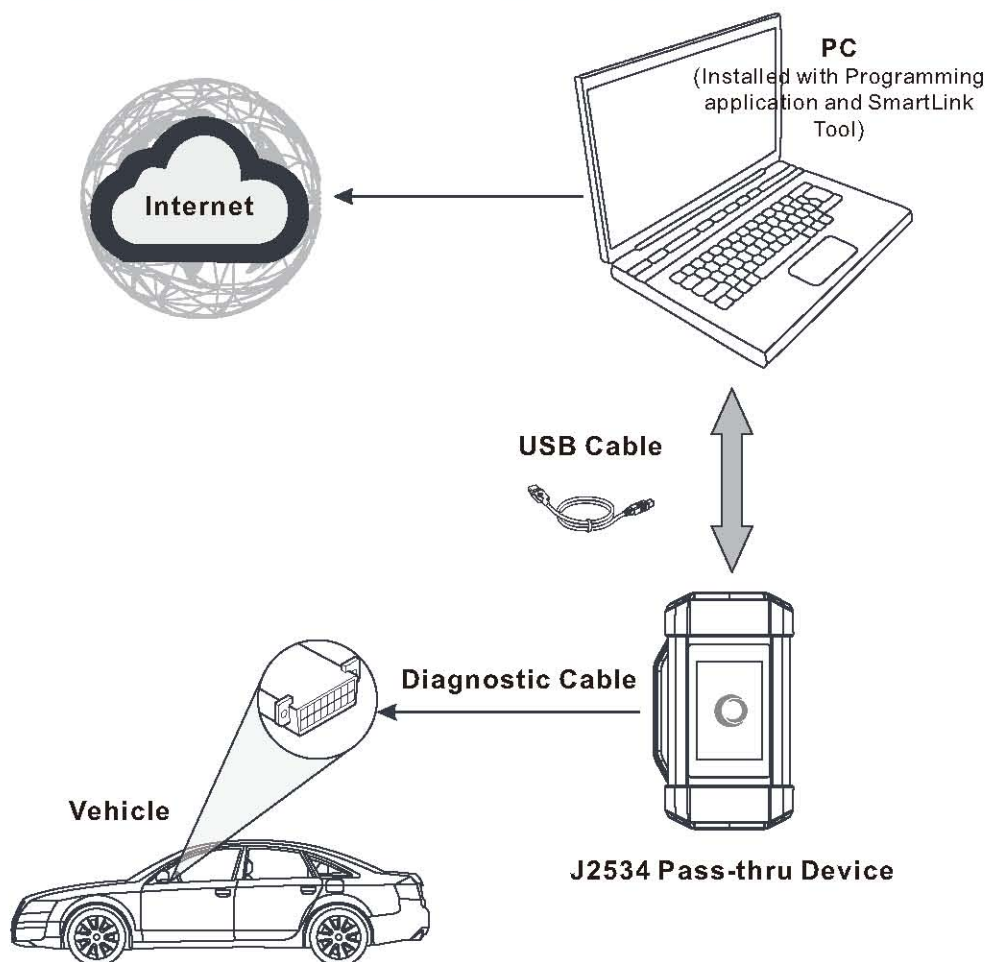
2. Vehicle Coverage

The supported vehicle models are decided by 1) whether the vehicle manufacturer's diagnostic software supports the J2534 protocol; and 2) which protocols are covered by the current SmartLink J2534 tool. The following table is only for reference use and subject to change without prior notice. For more details, refer to the automaker's service website (See **Appendix**).

	Diagnostic software	Vehicle Covered
Diagnostic software & Vehicle coverage	TIS(TOYOTA Techstream)	TOYOTA
	HDS(HONDA Diagnostic System)	HONDA
	Volvo VIDA	VOLVO
	ODIS	VW
	ISTA	BMW
	IDS/FDRS	Ford
	SUBARU SSM4	SUBARU
	GDS2	GM
	WiTech 2.0	Chrysler
	Xentry	Benz
	SDD	Land Rover/JAGUAR
Featured function	Determined by the vehicle diagnostic software	

3. Start Reprogramming

1. Follow the illustration below to make connection and settings.



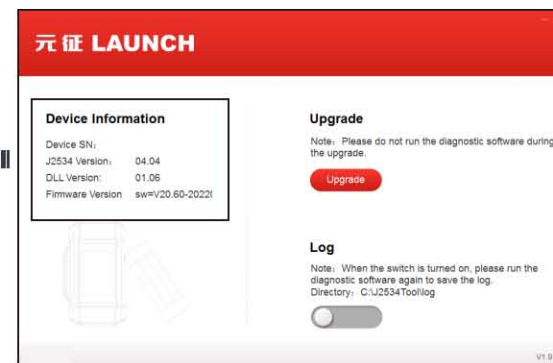
2. Run the vehicle manufacturer's programming application on the PC.
3. If the software prompts you to select the target VCI (Vehicle Communication Interface) device, please choose "SmartLink" (If no such prompt pops up, please follow the instructions on the screen to proceed directly) and then follow the onscreen instructions to proceed.

*Note: When used with the vehicle manufacturer's programming application, the SmartLink C not only can work as a J2534 Pass-thru device, it also can work as a VCI device to read DTCs, clear DTCs and read live data etc.

4. Upgrade

1. Connect the J2534 Pass-thru device to the PC via a USB cable.
2. Double click the SmartLink Tool to run it. The following screen will appear:

If no device is connected, this column will displayed the information of the last connected device. Otherwise it will display the current device information.



3. Tap "Upgrade", the system will start detecting all available newer version. If a newer version is found, the system will automatically upgrade to the latest version.

*Note: Please do not run the diagnostic software of the vehicle manufacturer during the upgrade.

4. If you come across some problems, please slide the Log switch to ON to record the log file. In this case, you need to run the diagnostic software again.

Appendix - List of Automaker's Service Website

Automaker	Website
TOYOTA	http://techinfo.toyota.com/
HONDA	http://www.serviceexpress.honda.com/
VOLVO	http://www.volvotechinfo.com/
VW	http://www.erwin.volkswagen.de/erWinVW
BMW	http://www.bmwtechinfo.com/
Ford	http://www.motorcraft.com/
GM	http://www.gmtechinfo.com/
Chrysler	http://www.techauthority.com/
Mercedes	http://www.startekinfo.com/
Land Rover/JAGUAR	http://www.landrovertechinfo.com/