

### 1. Charging & Turning On

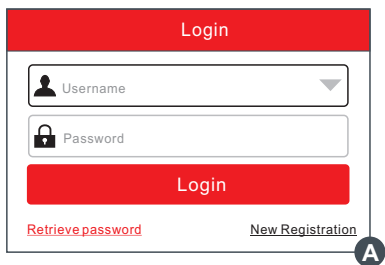
1. Plug one end of the included power adaptor into the USB port of the handset, and then other end into the AC outlet.
2. Once the battery is fully charged, disconnect the power adaptor from the AC outlet.
3. Press the [POWER] button on the handset, the system starts initializing and then enters the home screen.

### 2. Wi-Fi Setup

1. Tap [Settings] on the home screen and then [WLAN] to configure Wi-Fi setting.
2. Select the desired Wi-Fi connection from the list. (Password may be required for secured networks).
3. When "Connected" appears, it indicates that it is properly connected to the network.

### 3. Register and Download Software

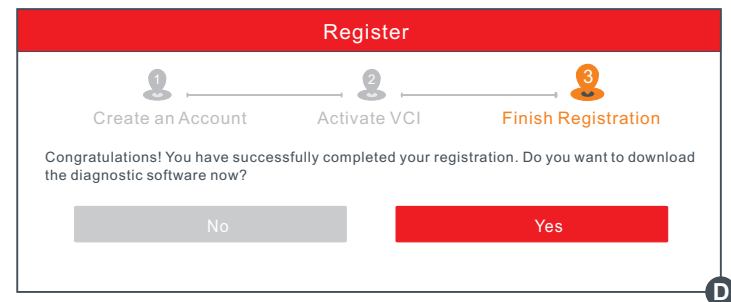
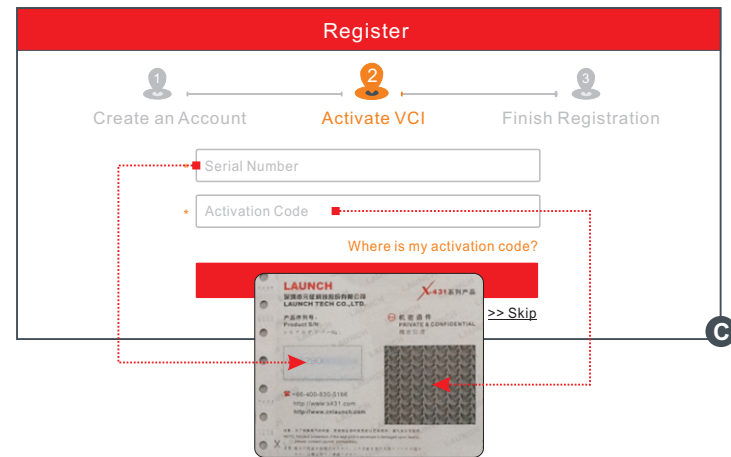
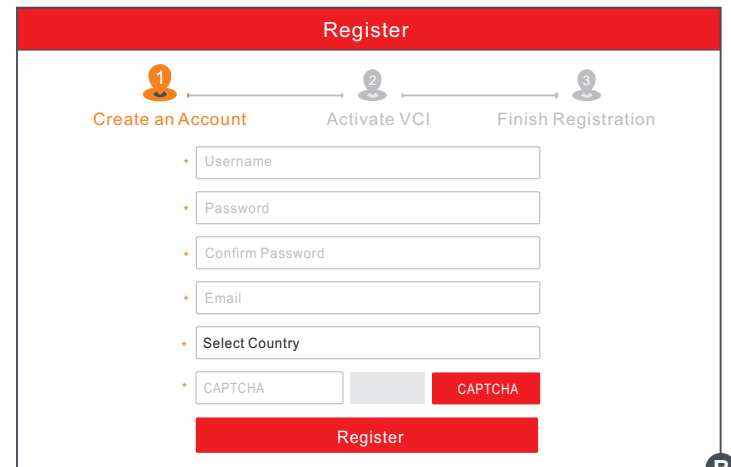
1. **Launch App:** tap on the application icon on the home screen, and then tap on "Login" on the upper right corner of the screen.



- A. If you are a new user, refer to step 2-4.
- B. If you have an app account, tap on "Login" to log in the system directly.
- C. If you forgot the password, tap on "Retrieve password", and then follow on-screen prompt to retrieve it.

2. **Create an App Account:** Tap on "New Registration" in Figure A, input the information (items with \* must be filled) and then tap on "Register". Refer to Figure B.
3. **Activate VCI Connector:** Input the Product S/N and Activation Code (can be obtained from the password envelope), and then tap on "Activate". Refer to Figure C.
4. **Finish Registration:** Tap on "Yes" to enter the vehicle software download screen. Refer to Figure D. To download it later, tap on "No".
5. **Download Diagnostic Software:** Tap "Update" on the update page to start downloading. Once downloading finished, the software packages will be installed automatically.

\*Note: When downloading the diagnostic software or checking for updates it is important to make sure the tool has a strong Wi-Fi connection.

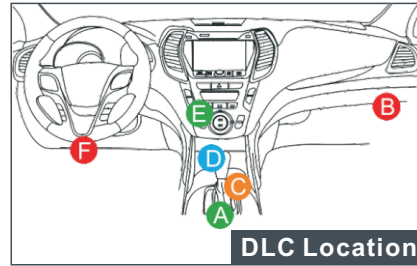


## 4. Vehicle Connection

### 1. Locate the vehicle's DLC:

The DLC(Data Link Connector) is typically a 16-pin connector where diagnostic code readers interface with the vehicle's on-board computer. It is usually located on driver's side, about 12 inches away from the center of dashboard.

In case no DLC is found, please refer to Automobile Repair Manual.



### 2. How to take out the VCI ?

It is pre-installed in the docking slot on the top of the display tablet. Use the hand to press the VCI once, it will be automatically ejected from the docking slot. When it is not in use, please insert it into the slot to avoid loss.

\*Note: Remember to remove the VCI from the vehicle's DLC and re-insert it into the VCI slot if it keeps unused.

## 3. Vehicle Connection

### 1. OBD II Vehicle Connection

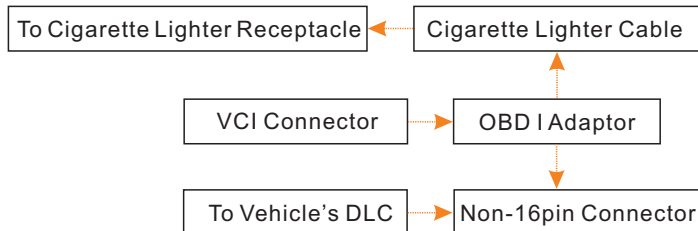
A. Directly plug the VCI into vehicle's DLC

B. Using OBD II extension cable to connect the VCI to the vehicle's DLC.

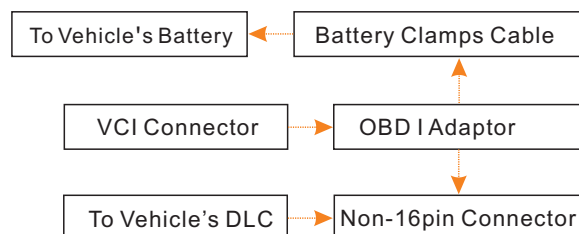
### 2. Non-OBD II Vehicle Connection

If the power supply on vehicle diagnostic socket is insufficient or the power pin is damaged, you can get power in the following ways:

#### A. Via Cigarette Lighter Cable



#### B. Via Battery Clamps Cable

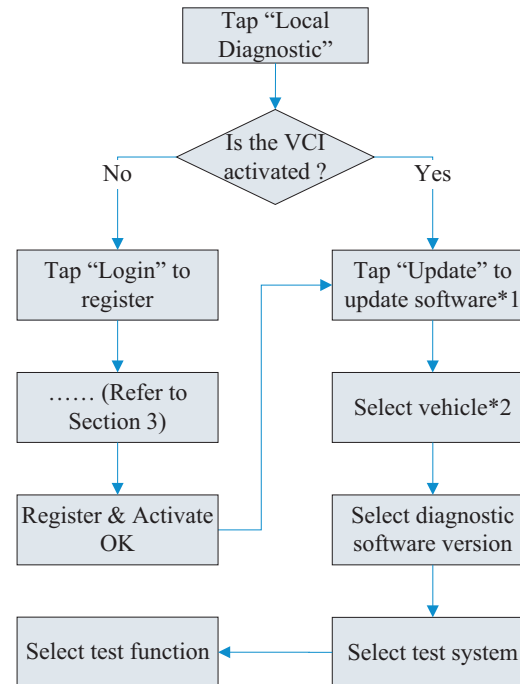


## 5. Start Diagnostics

Before diagnosing, please make sure the following preparation:

- Switch the ignition on.
- Vehicle battery voltage range should be 9-18Volts.
- Throttle should be in a closed position.

For new users, please follow the operation chart shown on the left to get familiar with and start using this tool.



#### Notes:

1. To enjoy more service and functions, you are suggested to check for updates on a frequent basis and keep synchronized with the latest available software.
2. If you choose "VINScan" or "Intelligent Diagnosis" to diagnose a vehicle, this step shall not apply.

**LAUNCH**

www.x431.com

Any question, please contact us via:

+86 755 8455 7891

overseas.service@cnlaunch.com

Pictures illustrated here are for reference purpose only and this Quick Start Guide is subject to change without notice. For more detailed operations, please refer to the User Manual.